



ACUBE INFOTECH



RFID ASSET TRACKING SYSTEM

# INTRODUCTION



ACUBE INFOTECH is the leading provider of business solutions in the field of UHF (Ultra High Frequency) RFID technology in the UAE & the GCC Region. Our core services include the development, implementation, and maintenance of customized business solutions that leverage advanced RFID technology.

Our business objective is to become a pioneer in the field of AIDC (Automatic Identification and Data Collection).

We currently serve customers all across the GCC and MENA region.



**ACUBE INFOTECH**



Asset Tracking |

Uniform & Linen Tracking |

Laundry Tracking |

People Tracking |

Jewelry Inventory Tracking |

Vehicle Tracking |

Event Tracking |

Retail Inventory Tracking|

Event Tracking |

Anti Theft Solution |

Parking Access Control |

Warehouse Tracking |

RFID Access control |



**440+**  
Projects

**15+**  
Countries  
Serving

**12+**  
solutions

**230+**  
Clients



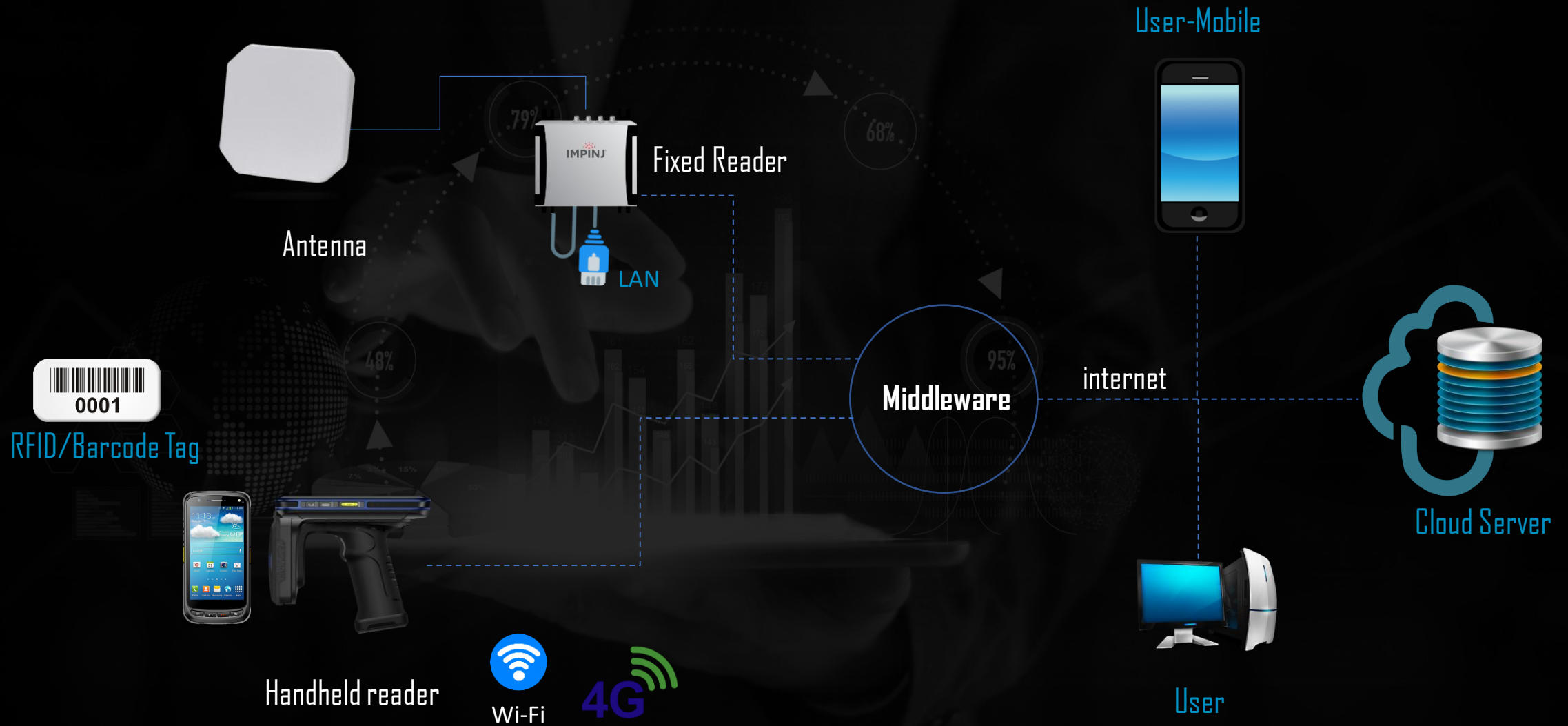
ACUBE INFOTECH



# RFID TECHNOLOGY



Radio Frequency Identification (RFID) is wireless communication technology that is used to uniquely identify tagged people or objects. RFID is an emerging technology and one of the most rapidly growing segments of today's automatic identification and data capture (AIDC) industry. Whether we realize it or not, RFID is an integral part of our life. RFID is used for hundreds, if not thousands of applications such as preventing theft of automobiles and merchandise, inventory management, collecting toll without stopping, managing traffic, gaining entrance to buildings, automating parking, controlling access of vehicles to gated communities, corporate campuses, and airports, dispensing goods, providing ski lift access, tracking library books, and the growing opportunity to track a huge amount of assets in supply chain management.





**Traccia** takes care of your assets in 360 degrees, the integrated system comes with a centralized platform, hardware, and accessories to form total management in asset control and monitoring. With the solution in place, every piece of your assets in your company will be kept in appropriate conditions and maintain its worth. **Traccia** maximizes the reliability and stability of assets, predicts equipment failure, and moves your preventative maintenance to the next level. **Traccia** overcomes the risks of theft, inaccurate records, outdated reports, auditing issues, failure in tracking assets in transfer, and human error.



Healthcare | Educational | Manufacturing | Hospitality | Aviation |  
Government | Construction | Banking |





# COMPONENTS

RFID Encoder



RFID hard tags cannot be printed or encoded with a Printer. In that case, RFID encoders are used. It's a compact device usually connecting to the USB of the computer.

RFID Printer



RFID Printer is used to print and program the tags. Depending on the use there are a variety of printers available. For normal usage, printers like ZD500R are used, which is capable of loading around 500 tags at a time. For bulk printing, ZT411R can be used which is faster and can hold up to 2000+ tags in a single load.

Fixed readers



Used for automated movement tracking of assets by mounting the reader and antenna in entry/exit points.

Handheld reader



The Android-based device with the mobile application is used for remote operations. It comes with 4G and WIFI connectivity.



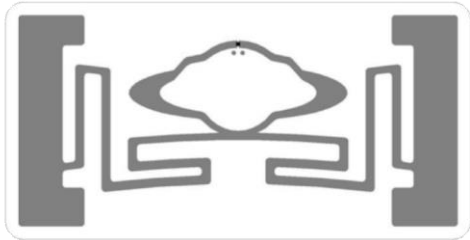


- The RFID Tags are enabled with Electronic Product Code (EPC) that identifies specific items as they travel between locations to share information more effectively. It also increases the speed of operations as items are recognized quickly and easily. When a reader scans the tag, it transmits back the unique EPC code. This is done with little to no manual effort required, compared to the work needed to open boxes and scan barcodes. This will offer significant operational benefits.

EPC global UHF Class1 Gen 2 (ISO 18000-6C)

Operating Frequency: Global 840-960 MHz

Memory: EPC 128 bits



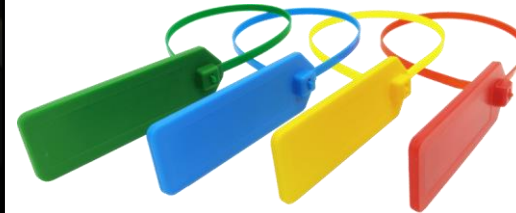
Non Metal Label

Paper or Synthetic RFID labels are used for all non metal assets like furniture and fixtures.



Metal RFID Labels

For metal and electronic assets, specialized RFID labels can be used.



Cable Tie Tag

Cable tie tags are used for pipe or any assets where the tags cannot be stuck or welded.



RFID Hard Tag

Hard tags are used for heavy and outdoor assets especially when the environment is challenging.



# HANDHELD TERMINAL

ACUBE



Asset transfer/Receive

Perform Asset Audit  
at different locations

Mobile login &  
Manual operations

Damage & maintenance  
management

Asset Status Updates

## RFID Handheld and Mobile application

- Customized RFID based application
- RFID tagged items captured using the application



RFID READERS



ANTENNA



1

Portal readers at Inbound & Outbound Area of Warehouses/ Stores enables Automated Tracking.



2

Anti-Theft System: Unauthorized movements from Store / Warehouse can be identified & notified through emails & Alarms

3

Audiovisual alarm for unauthorized asset movements.

For tracking, assets movement within the premises fixed RFID readers is used. Entry/exit gates are equipped with antennas as shown in fig. The system provides live monitoring and hence all the movements are tracked and updated.

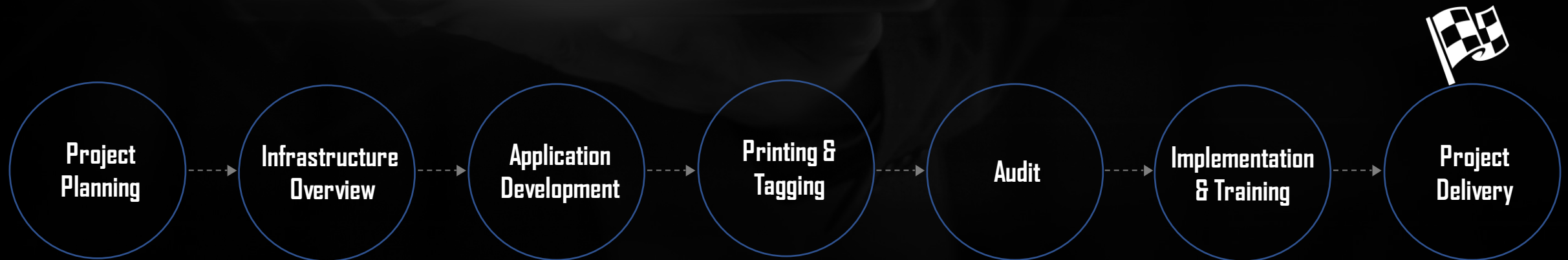


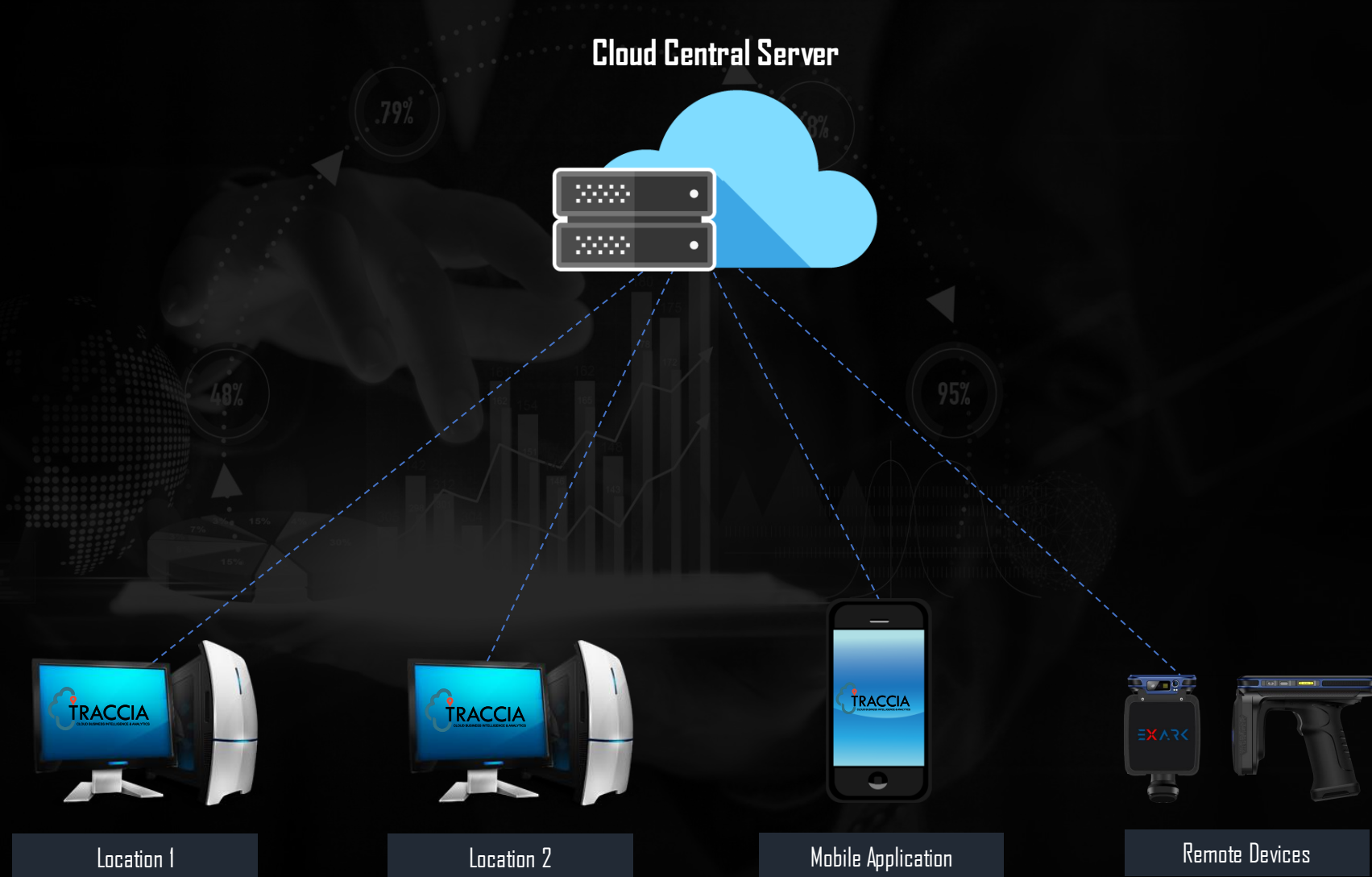


[www.acubeinfotech.ae](http://www.acubeinfotech.ae)



## RFID Asset Tracking System







# PURCHASE ENTRY

An asset is tracked from the purchase until it is disposed of. The purchase bulk entries are made into the system via importing in excel or CSV file or can be recorded manually. Automated synchronization is possible through integration with ERPs



ERP Integration



PO can be downloaded from the ERP through integration. The data will be automatically synchronized with the Acube system.

1

For a standalone system, PO entry can be done manually. or direct asset registration can be done.

2







# ASSET REGISTRATION

**Asset Register**

Save Back Clear

**Asset Receipt**

Product Code \*  
Purchase Price \*  
Purchase Date \* 9/30/2021  
Supplier Code  
Is Depreciation Required ☒

Attach Image Choose File No file chosen  
Product Description  
Category Code  
Sub Category Code

**Asset Attributes**

Brand Code  
Model Code  
Asset Status  
Asset Condition  
Department  
Employee  
Supplier Part No  
Location

**Finance Details**

Warranty Start Date  
Warranty End Date  
Warranty Value  
Insurance Value  
Insurance Company  
Insurance End Date  
Insurance Start Date  
Salvage Value

The purchased Assets are now registered in the system with all required information including the Images of the assets. RFID/Barcode data are assigned to the assets. For machinery and Equipment warranty details, AMC details, and Maintenance details can be entered if required.

Masters like location, category, subcategory will be created. Users can select the parameters from the drop-down.

RFID number is automatically generated from the software.

Alternatively, the handheld device can be used for registration. The pre-printed tag is scanned and registered.

1

2

3



Asset tagging is carried out by trained executives. All assets are verified and appropriate tags are selected considering the material and the environment. The printed tag is pasted to the respective assets.

Furniture & Fixtures are tagged using normal RFID labels. Tags are customizable as per requirements.

On-metal RFID labels are used for tagging metal assets and IT assets.

Hard tags are used for outdoor assets in a rugged environment. These tags are either welded, riveted, or tied using a cable tie.

1

2

3



# OPERATIONS



Asset operations include the transfer of assets between locations and custodians, maintenance tasks like damage reporting, periodic servicing, periodic audit of assets, asset disposal, etc.

Handheld or desktop applications are used for transferring assets between any locations or custodians.

1

Asset audit can be performed location-wise, room, building, etc. Assets are counted using an RFID handheld reader at 200+ items per second.

2

AMS Application will notify the depreciation value of assets. The disposal can be done from a desktop application or handheld application.

3





# HANDHELD APPLICATION



Sign In

**TRACCIA**  
CLOUD BUSINESS INTELLIGENCE & ANALYTICS  
Powered by Acube Infotech Co LLC

User Name  
Demo User

Password  
\*\*\*\*

**Let's go**

By creating an Account, You are agreeing to the term and conditions and agreement

Remote Login

Barcode 12345678

Location SERVICE ROOM

Category FURNITURES

Subcategory Chair

Asset Name Meeting Room Chair

Asset Registration on the go

Asset

Home Report

Stocks Found Stocks Missing Stocks

Macbook Pro Electronics

Macbook Air Electronics

Executive Desk Furniture

Work station Furniture

Instant Audit Result Preview

Transfer

From Location

To Location

Notes

While you confirm, items are transferred. Choosing from and to locations are mandatory.

**Confirm**

Asset Transfer option



Traccia handheld application enables to perform asset operations on the go. 4G/Wi-Fi connectivity enables the device to communicate with the central server from remote locations. With a dedicated registration module, add new assets and register them instantly. Update asset status and report damage with ease.



# DASHBOARD

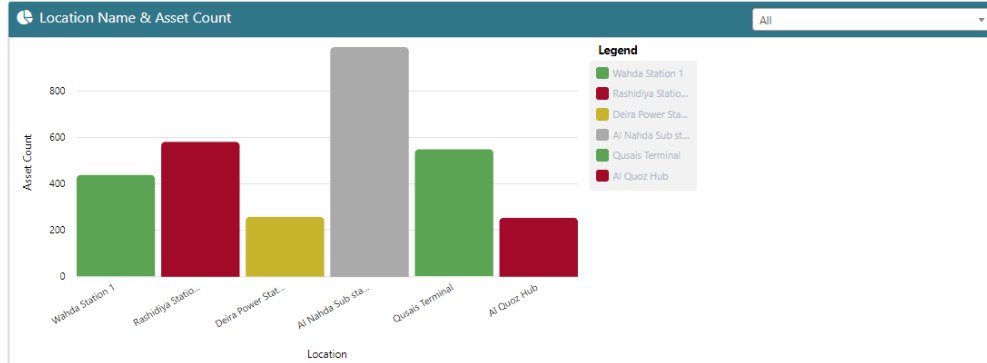


Total asset count, assigned & unassigned asset count, asset count by location etc.

## Dashboard



### Asset by Location



### Asset Name & Count

## Recent asset transactions

### Last 10 Transactions

Type	Number	Date	User Name
Receipt	RCPT-9834567	Sun Nov 07 2021 12:08:2...	Libin
Direct Tranfer	DRTR-58745	Tue Nov 09 2021 12:08:2...	Arun
Tranfer	TR-2587	Thu Nov 11 2021 12:08:2...	Balu
Disposal	DD-6598	Sun Nov 14 2021 12:08:2...	Balu

## Asset status details

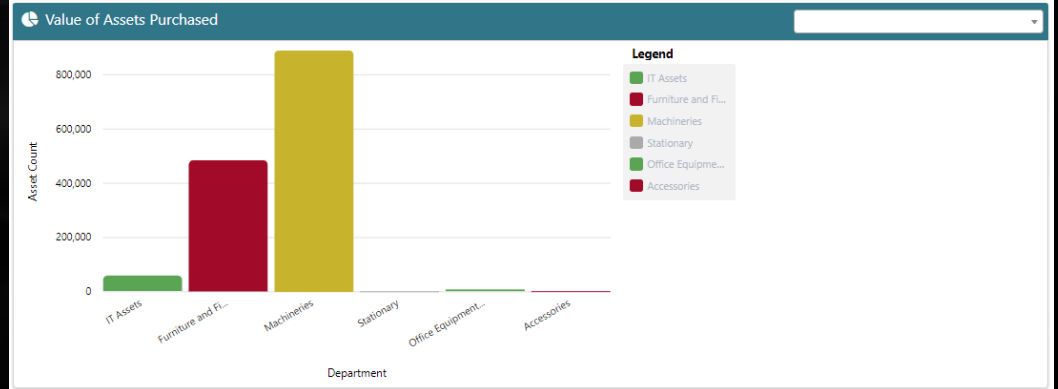


## Never miss a maintenance schedule

### Maintenance Schedule Alert with Asset Details

Serial No	Product Code	Product Name	Employee Name	Department Name	Location Name
AcsOAc000001	PS	Paper Shredder	Libin	Information Technology	Glb Testing
OEPRJ0000002	PRJSA	Projector	Libin	Information Technology	Glb Testing
STYNTB0000995	NTBA4	Notebook A4 Size 200 P...	Libin	Information Technology	Tag Location
FURCR0000151	P001	High Back Chair	Libin	Information Technology	Board Members Meeting

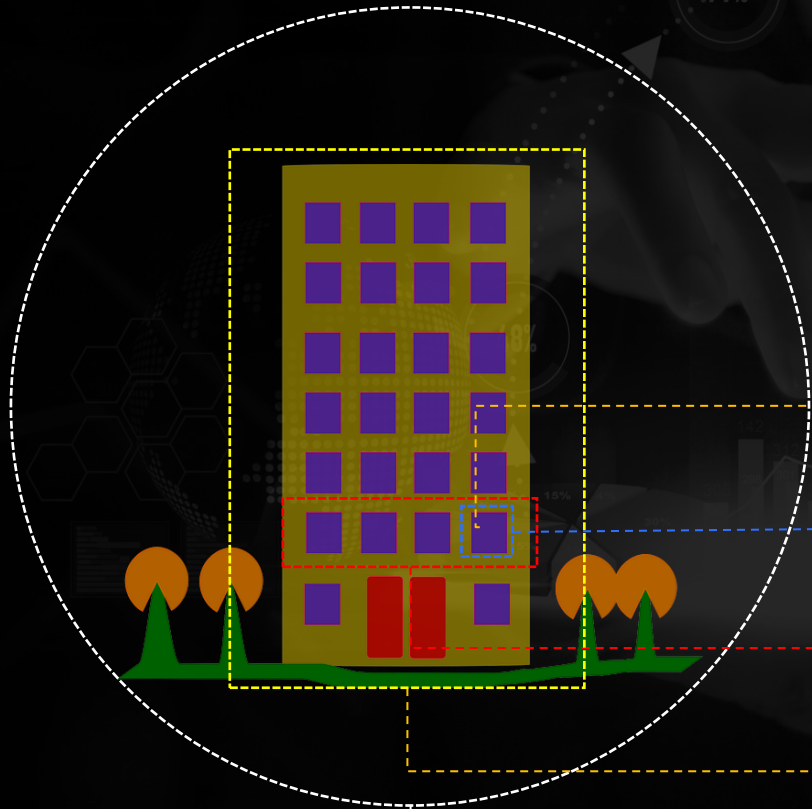
## Category wise value of asset purchase



Get a real-time birds eye view of everything happening related to your assets with the advanced dashboard feature.



# LOCATION SET UP



Location: Create Multiple Location In a Room

Room: Create Multiple Rooms In a floor

Floor: Create Multiple Floors For a Building

Building: Create Multiple Building within a site

Site: Create Multiple Sites







# ASSET ATTRIBUTES



Category: IT Assets

Brand: Apple

Model: I mac 2020

Employee: John

Department: Marketing

Status: Active

Sub Category: All in one Desktop Computer

Product: Apple I Mac 4K All in one PC

Warranty Start: 11.11.2020  
Warranty End: 11.11.2021

Supplier: Digitech Computers

Maintenance Due Date: 10.10.2021

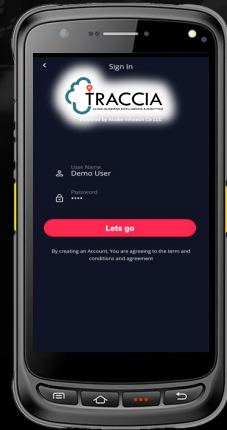




## ASSET TRANSFERS



Location 1



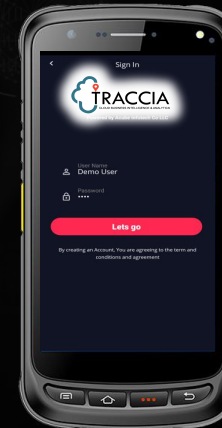
Asset Transfer Between Locations



Location 2



Custodian 1



Asset Transfer Between Custodians



Custodian 2



## ASSET LOAN



Asset Loan Module

## ASSET AUDIT



Asset With RFID/Barcode



## ASSET RECEIPT

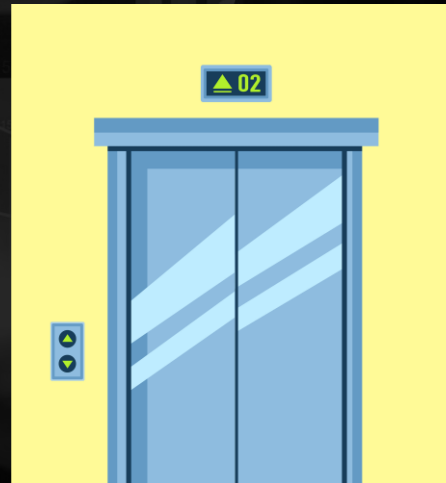


Asset Purchase

## ASSET MAINTENANCE

Last Maintenance  
was on 17.4.2020

Next Maintenance  
Due on 22.10.2020

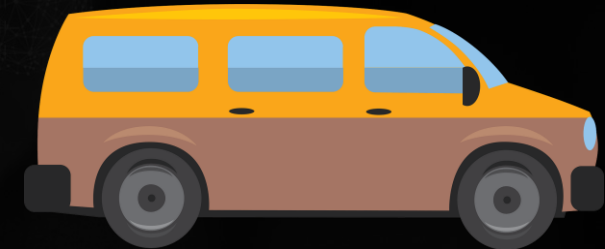


Periodic Maintenance of Assets

## INSURANCE

**Insurance Expired**  
**on 1.10.2021**

HYUNDAI H1  
14 Seater  
Plate :DUBAI 12345



View and manage insurance





## NOTIFICATIONS

**AMC Renewal**  
Due on 1.10.2021  
HAVAC  
Si No: HV12345

**Warranty**  
Ending on  
20.09.2021  
Sony LED TV 65"  
Si: BRV12345



## DEPRECIATION



Category/Subcategory wise

2020



2021



2022





## SYSTEM BENEFITS

- Quickly locate critical equipment when it's needed and avoid purchasing new, redundant assets.
- Maintain more accurate physical inventories with less manual labor (labor savings can be reduced by 90%).
- Reduce shrinkage and lost assets.
- Improve security for critical assets.
- Improve the capital expenditure process.
- Increase productivity with automated business processes.
- Increase the utilization of the assets (30-70% on average).
- Simplify audits.





# Professional Services: Verification Tagging & Reconciliation

Asset VTR is the most integral part of an asset management solution. Due to high capital and revenue expenditure and increasing compliance requirements, it is vital to maintain proper records of fixed assets. It ensures to avoid any misappropriation of assets and maintain organizations operation seamlessly. Identification, tracking, and controlling of assets with RFID tags become of utmost importance. ACUBE Professionals provide the complete VTR sessions to the clients or if needed training can be provided too.

1

**Asset counting & Verification:** All the assets are physically counted and verified. If an asset register is not available then it is created based on location, category, and sub-category. Details like brand, model, serial number, warranty details, and price are recorded.



2

**Asset Registration:** The recorded asset details are now entered in **Traccia**. Alternatively, the android mobile application can be used for faster registration.



**Tag Printing:** Asset tags with all required fields are printed using Barcode/RFID printers. Print design can be customized. The selection of tags depends upon the surface of the material and environment it is used.

3



**Asset Tagging:** The printed tags are pasted on the assets. Specialized tags are used for metal surfaces and harsh environments. Our professionals make sure all assets are tagged.

4



**Report:** After the tagging process is completed, a final audit is conducted using RFID/Barcode readers. The advantage of an RFID reader over a barcode scanner is that all assets can be scanned without line-of-sight during an audit. Reports can be generated on the same.

5



# CLIENTS



ACUBE INFOTECH





Thank You



ACUBE INFOTECH